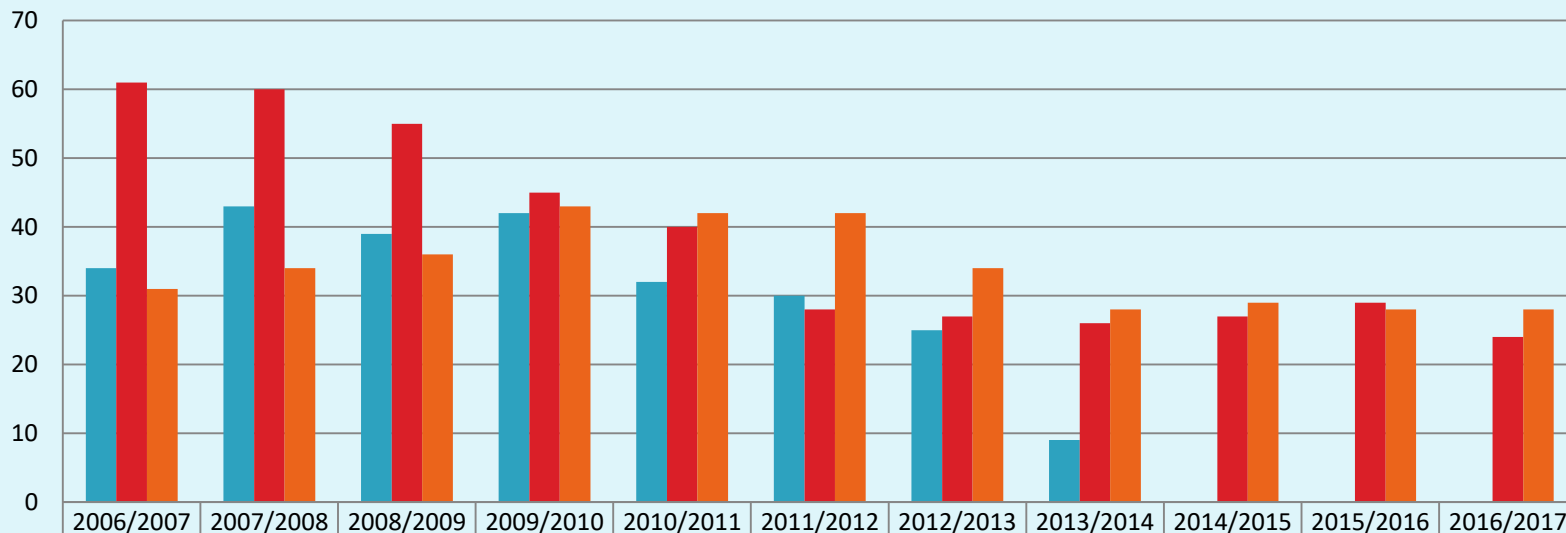




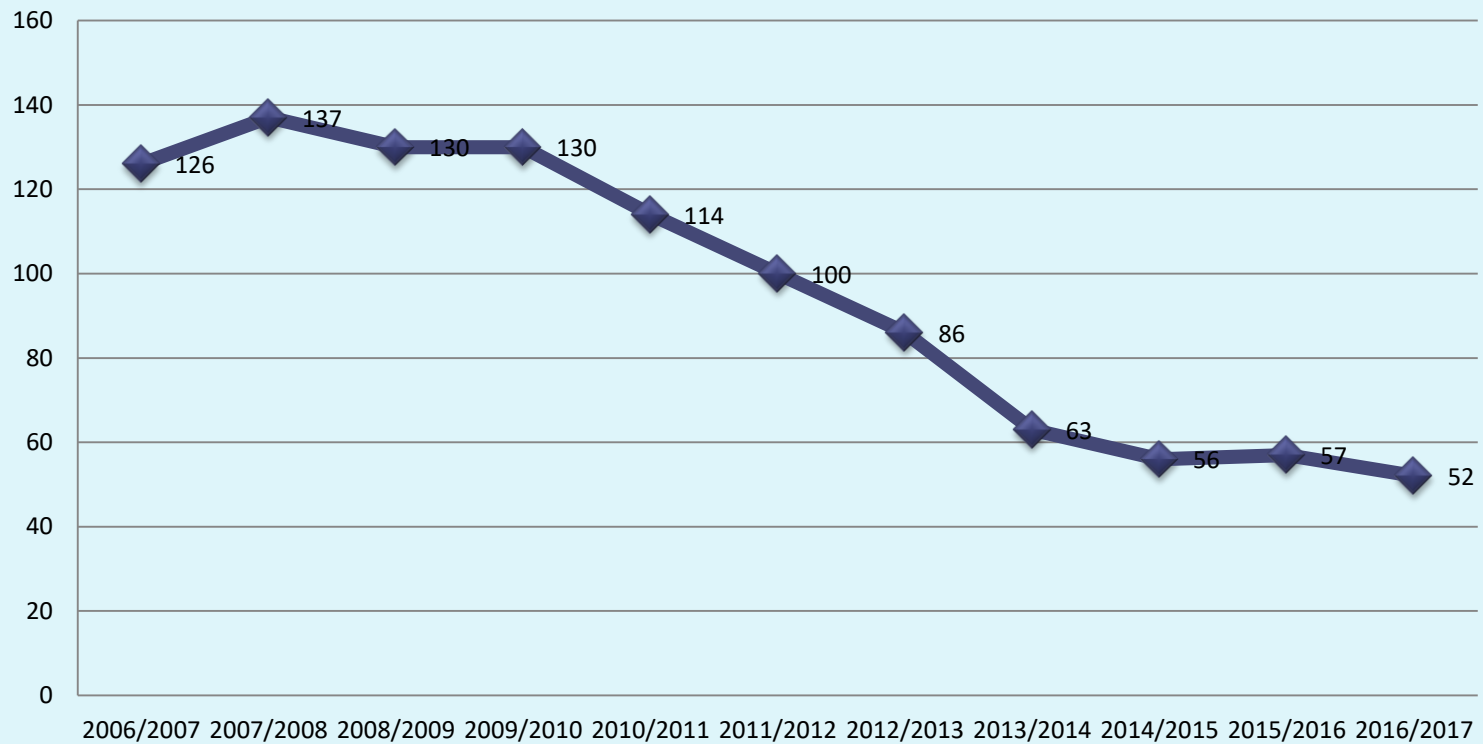
FREGUESIA DE VERMOIL  
**Balanço - Educação**  
2005/2006 – 2016/2017

# Nº de alunos no 1º CEB



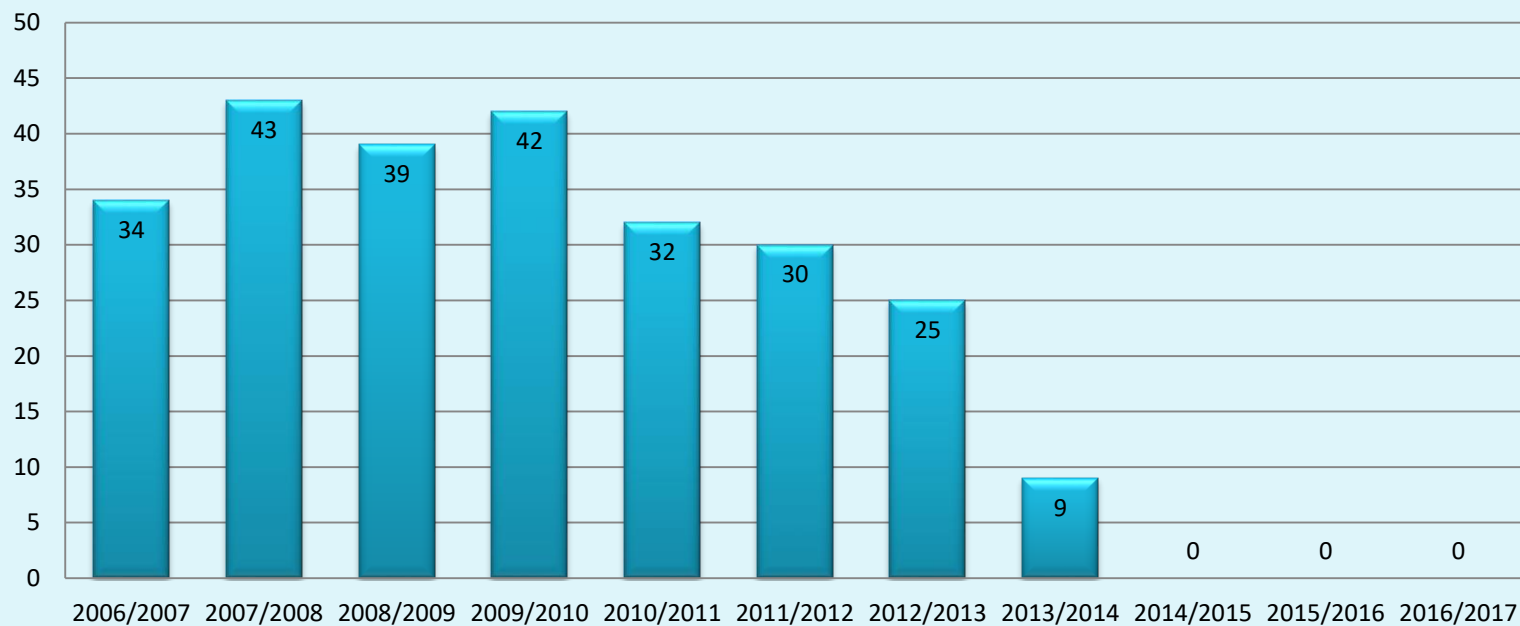
■ Matos da Ranha	34	43	39	42	32	30	25	9	0	0	0
■ Outeiro da Ranha	61	60	55	45	40	28	27	26	27	29	24
■ Vermoil	31	34	36	43	42	42	34	28	29	28	28

# Nº total de alunos no 1º CEB



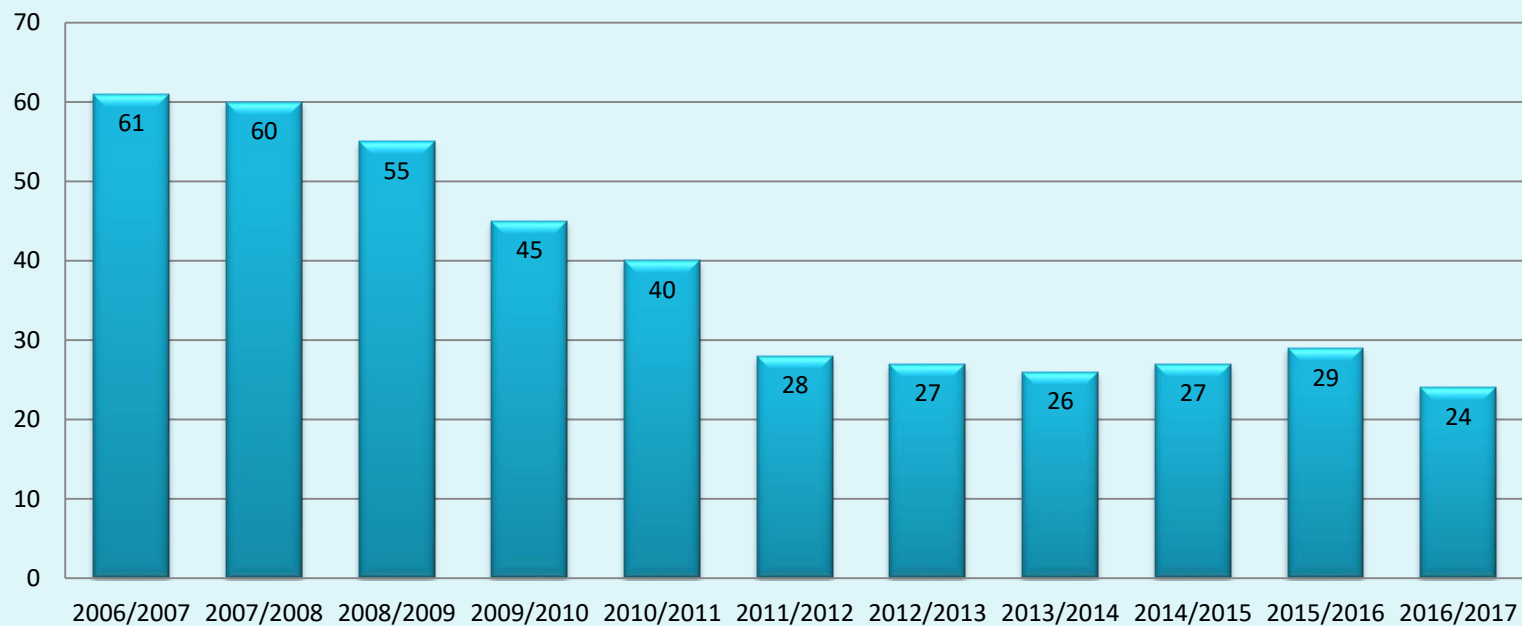
# Nº de alunos no 1º CEB

## Matos da Ranha



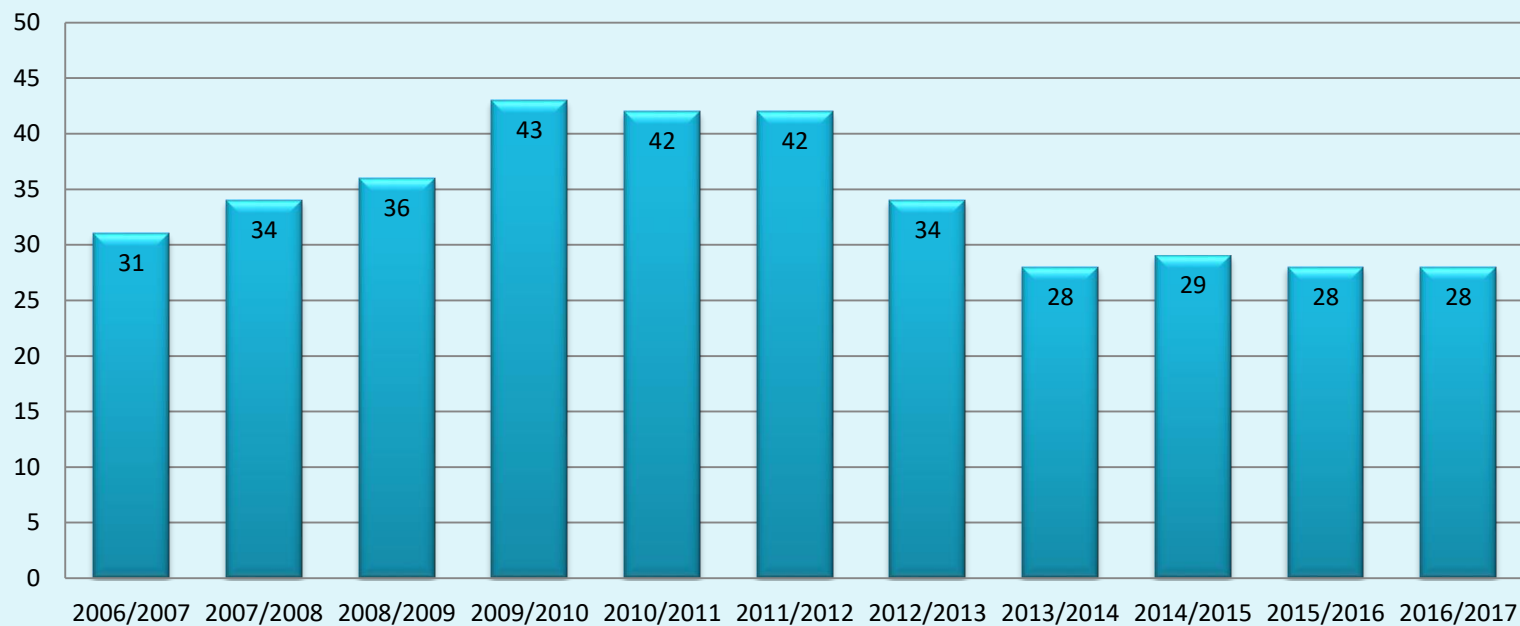
# Nº de alunos no 1º CEB

## Outeiro da Ranha

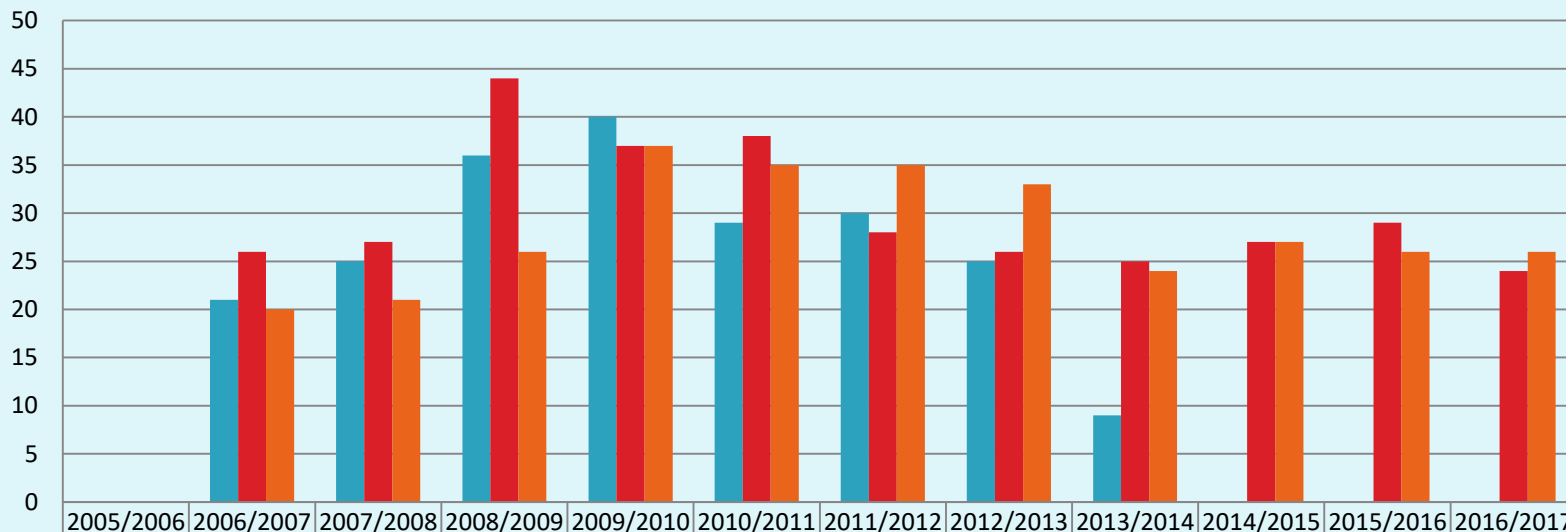


# Nº de alunos no 1º CEB

## Vermoil

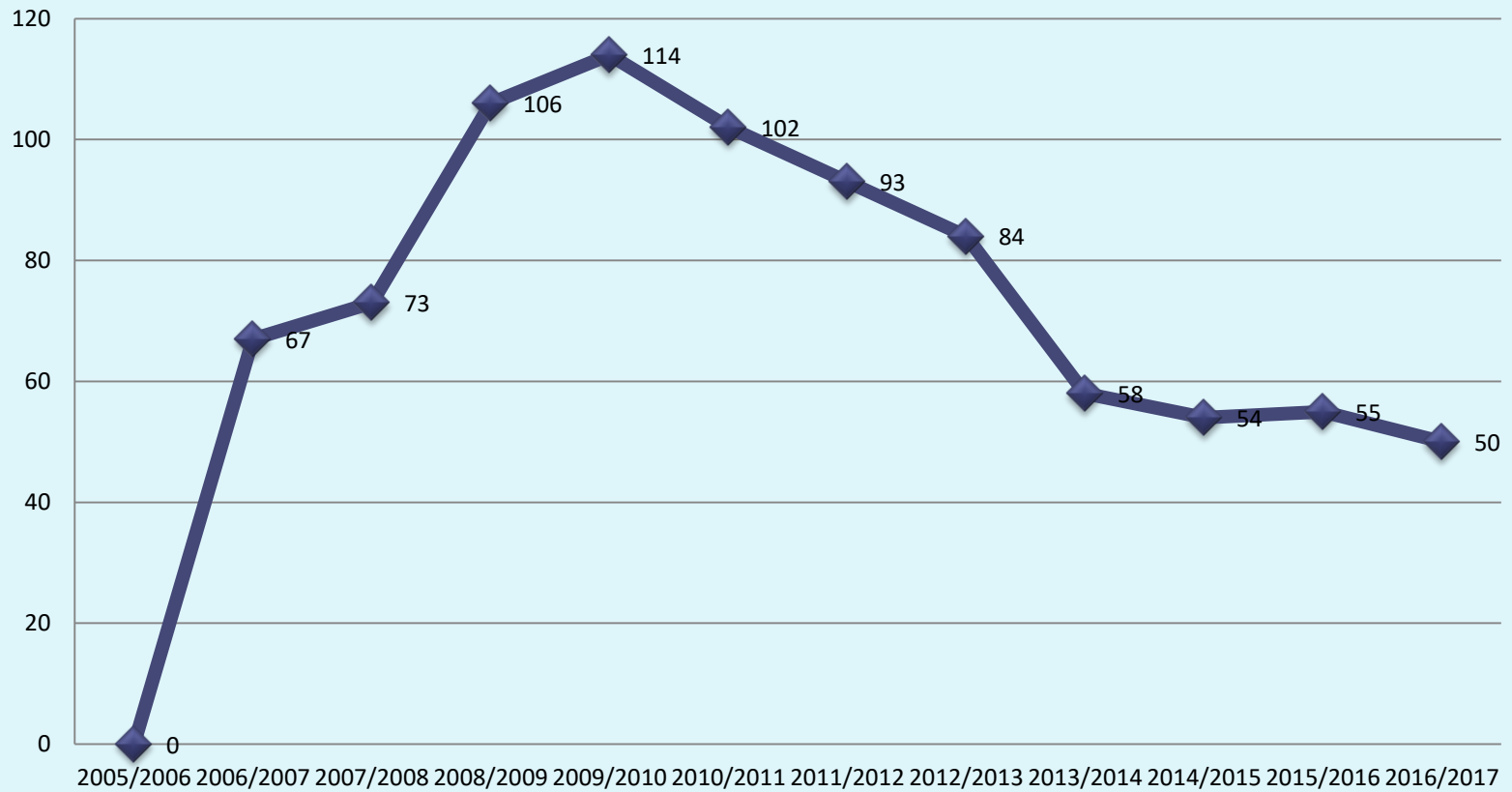


# 1º Ciclo - Refeições



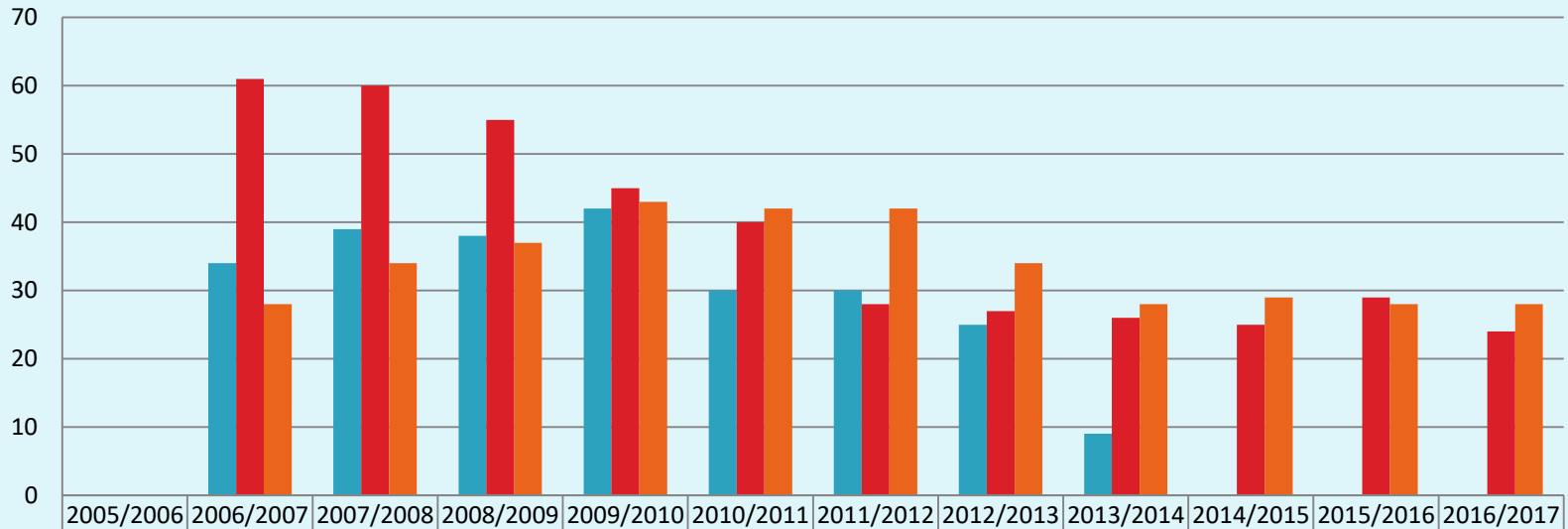
■ Matos da Ranha	0	21	25	36	40	29	30	25	9	0	0	0
■ Outeiro da Ranha	0	26	27	44	37	38	28	26	25	27	29	24
■ Vermoil	0	20	21	26	37	35	35	33	24	27	26	26

# 1º Ciclo - Refeições



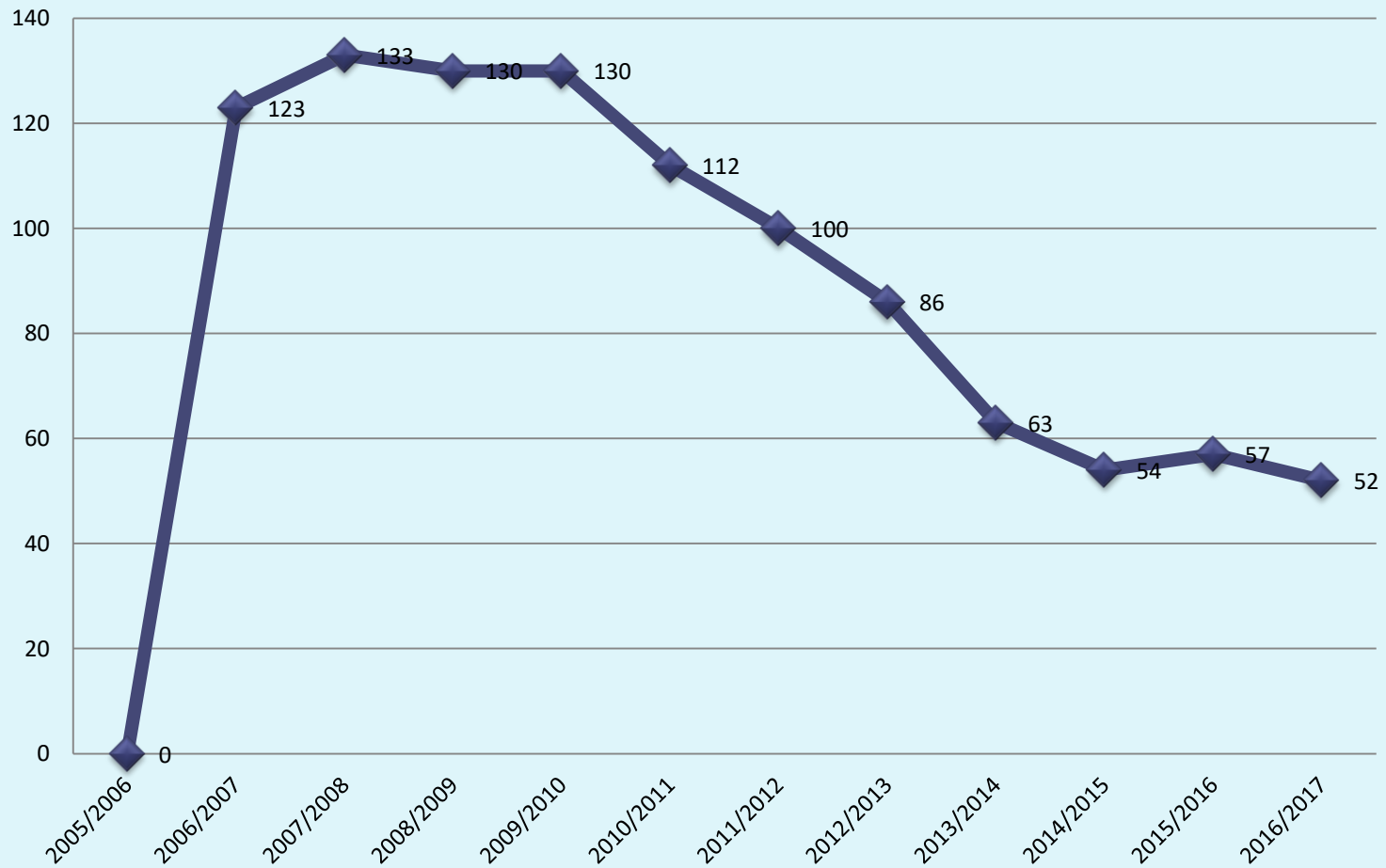


# 1º Ciclo – AEC's

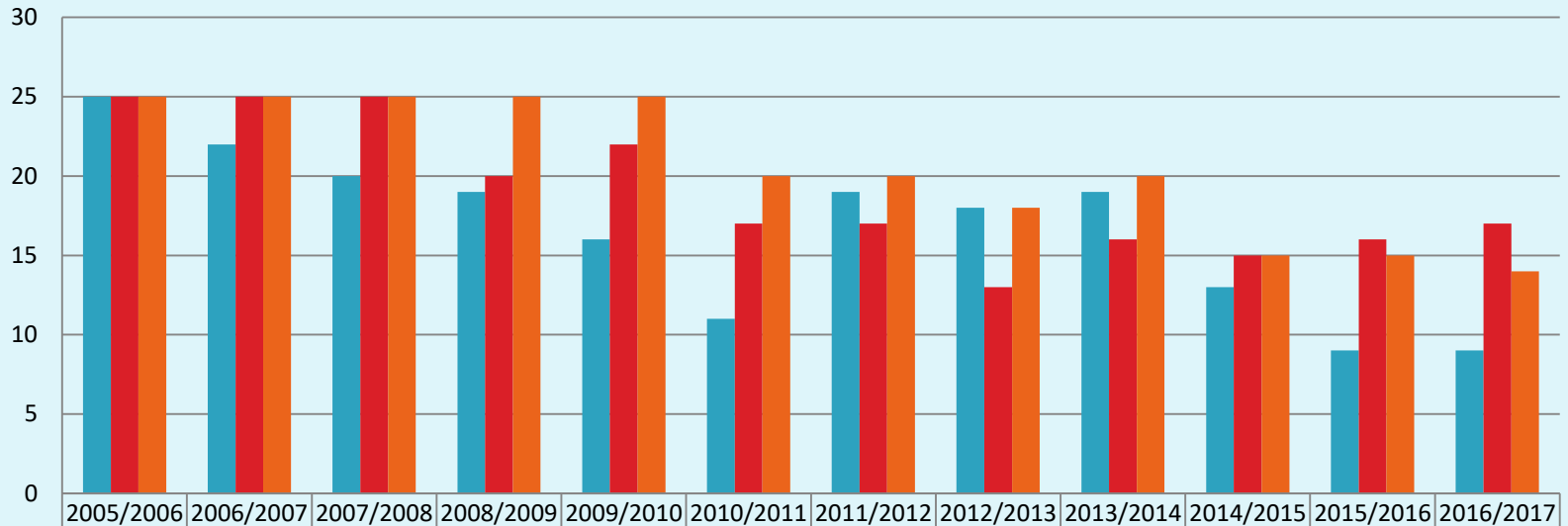


■ Matos da Ranha	0	34	39	38	42	30	30	25	9	0	0	0
■ Outeiro da Ranha	0	61	60	55	45	40	28	27	26	25	29	24
■ Vermoil	0	28	34	37	43	42	42	34	28	29	28	28

# 1º Ciclo – AEC's

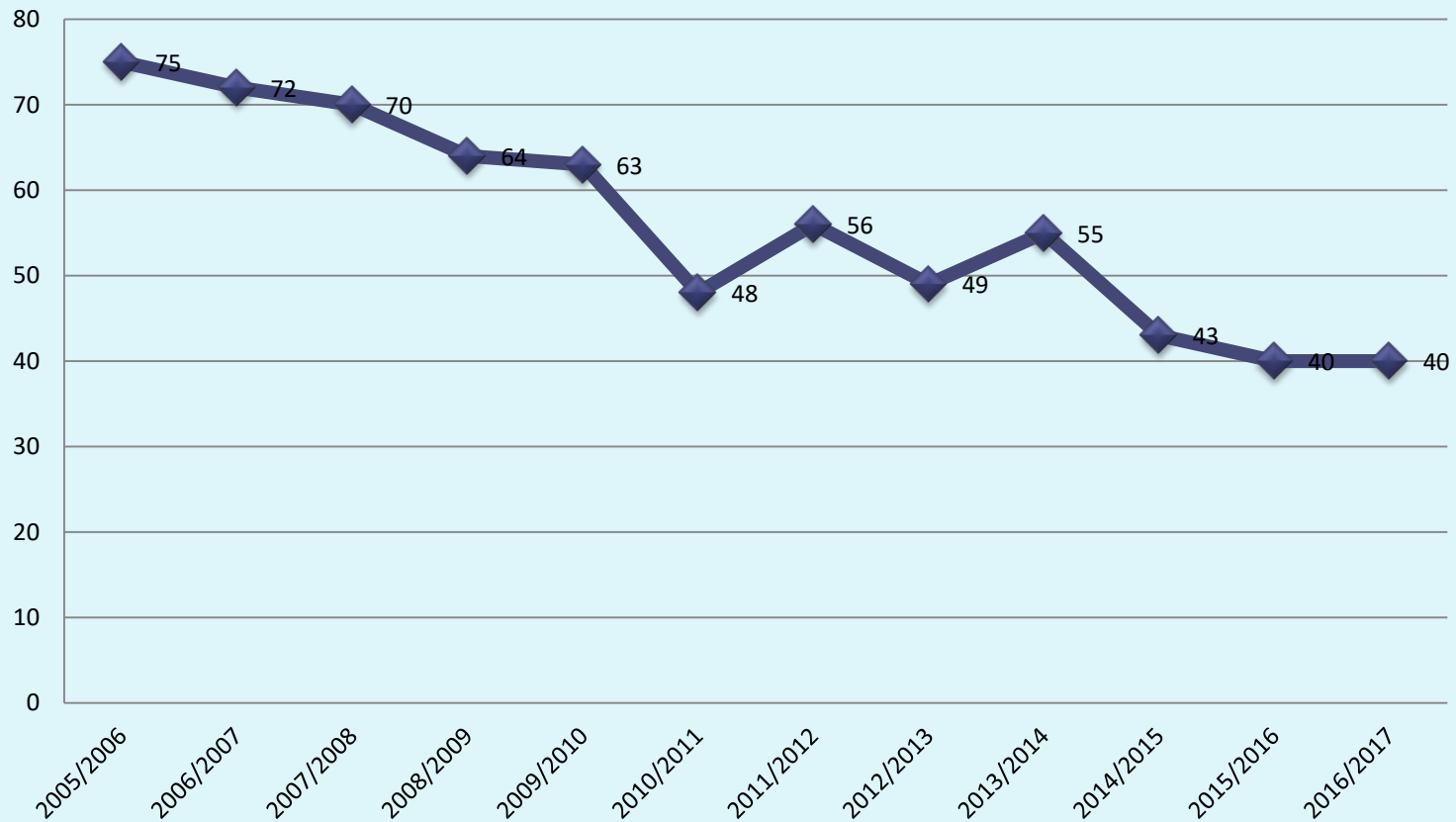


# N.º de Alunos no Pré-Escolar

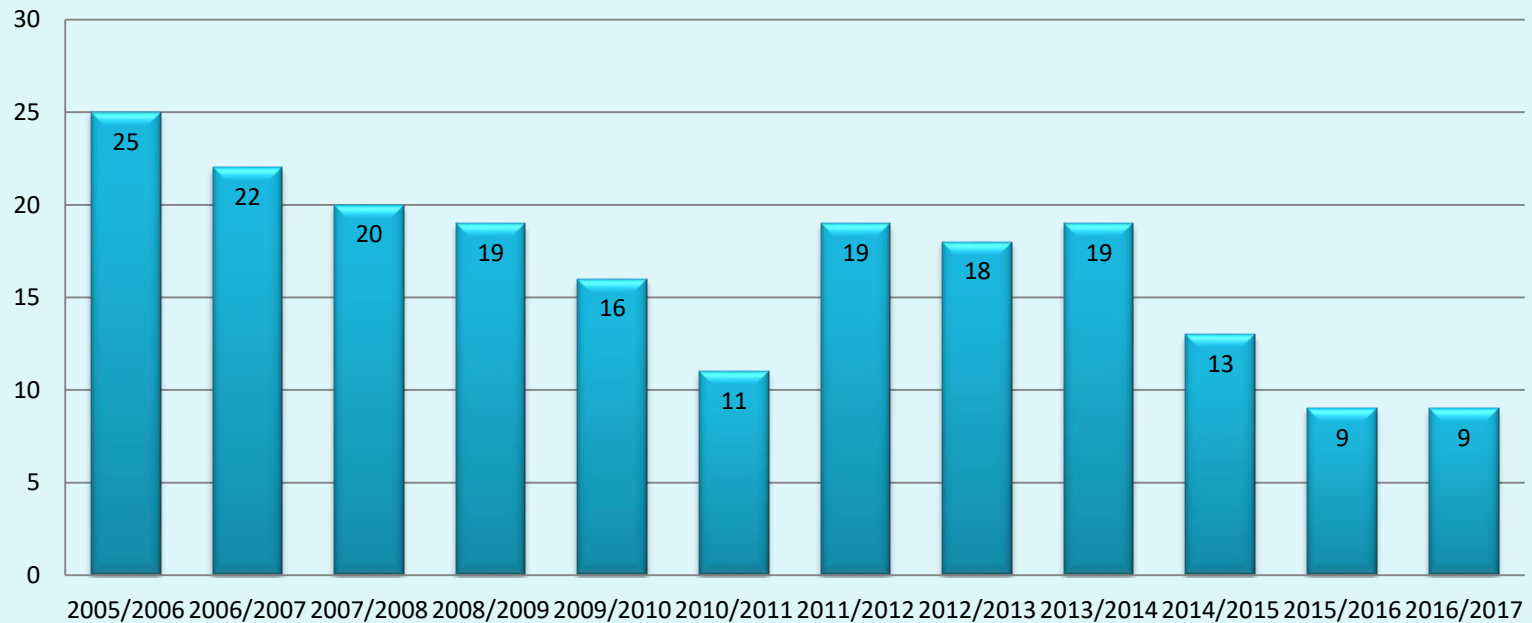


■ Matos da Ranha	25	22	20	19	16	11	19	18	19	13	9	9
■ Outeiro da Ranha	25	25	25	20	22	17	17	13	16	15	16	17
■ Vermoil	25	25	25	25	25	20	20	18	20	15	15	14

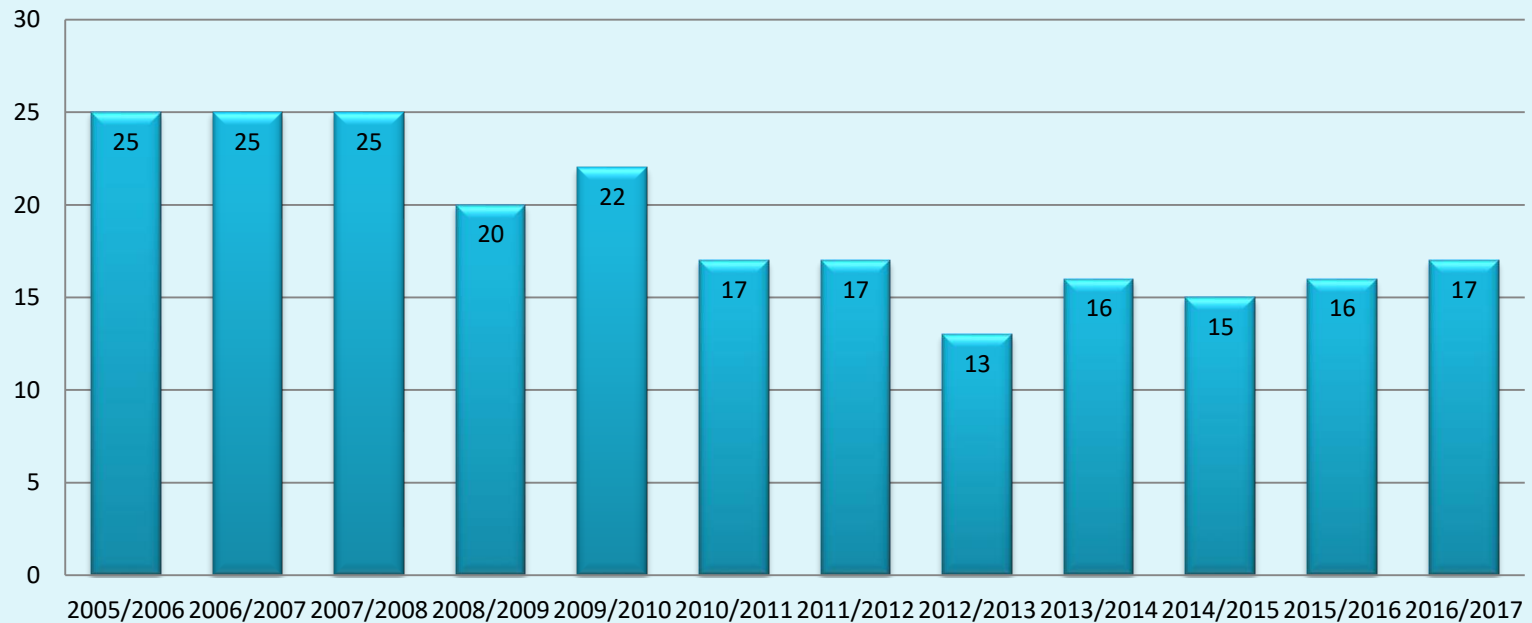
# N.º de Alunos no Pré-Escolar



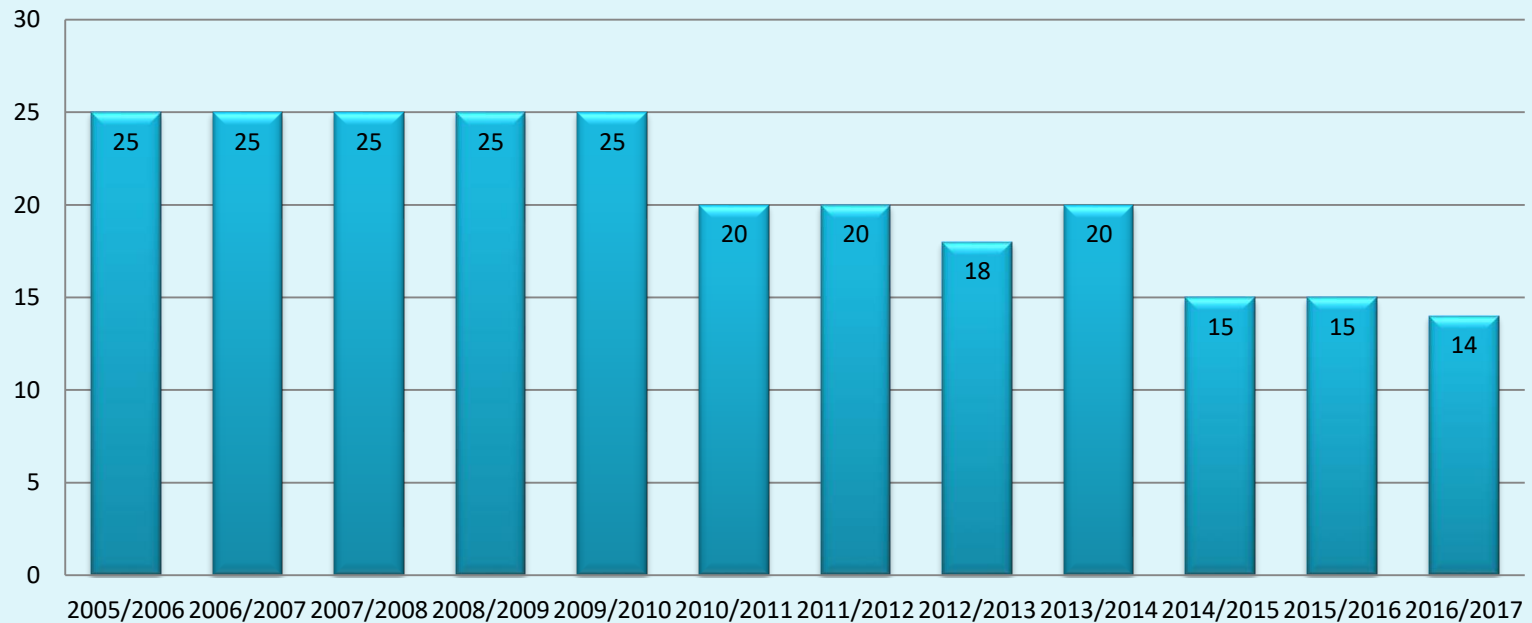
# N.º de Alunos no Pré-Escolar Matos da Ranha



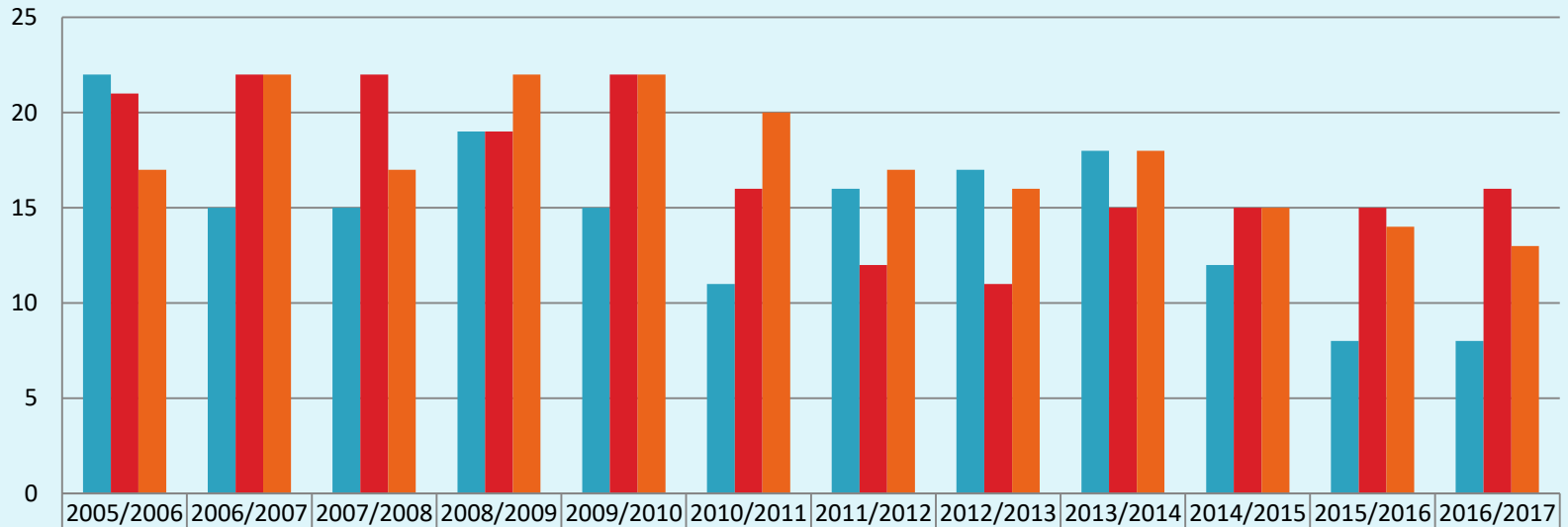
# N.º de Alunos no Pré-Escolar Outeiro da Ranha



# N.º de Alunos no Pré-Escolar Vermoil



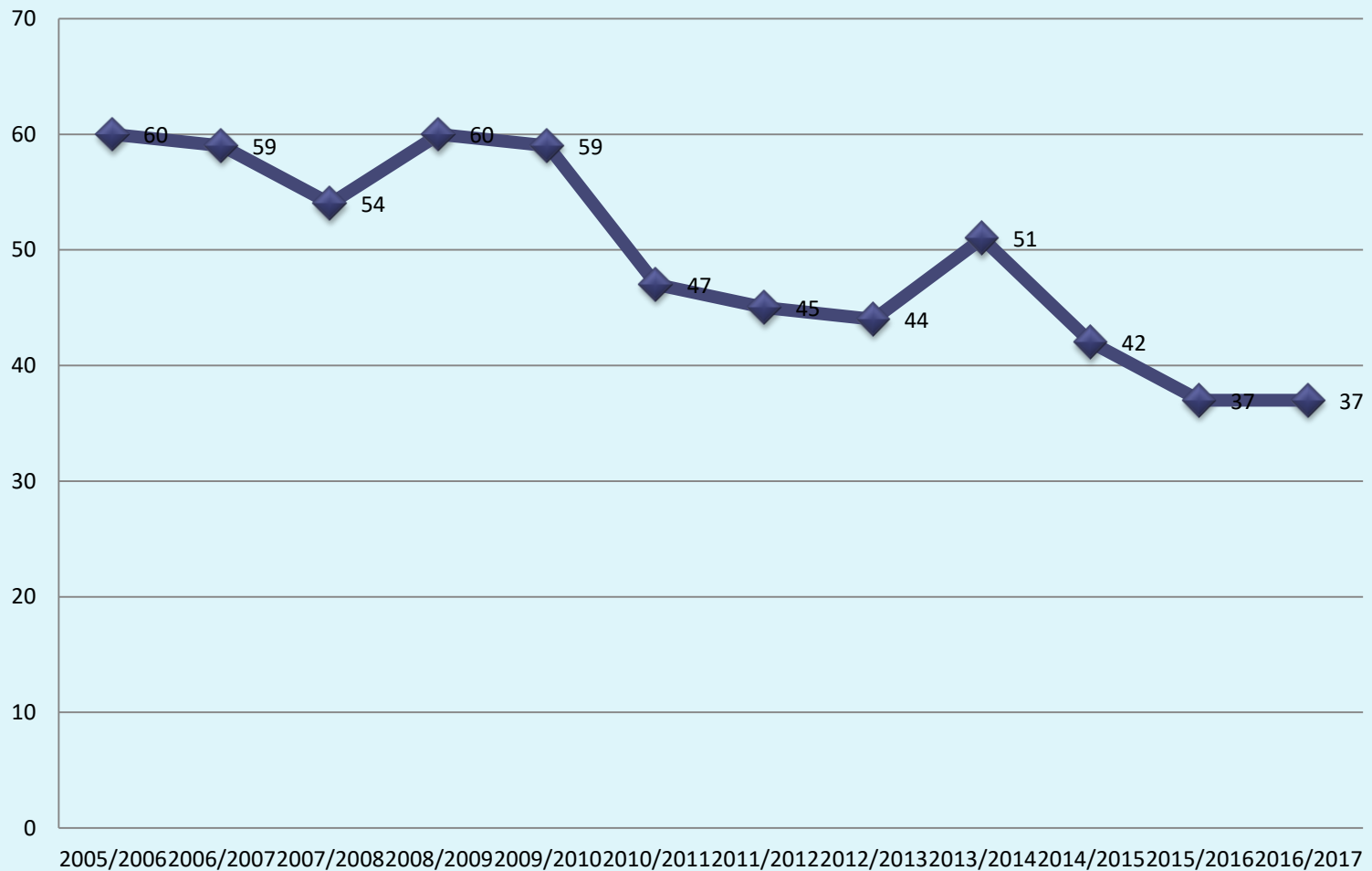
# Pré-Escolar Refeições



■ Matos da Ranha	22	15	15	19	15	11	16	17	18	12	8	8
■ Outeiro da Ranha	21	22	22	19	22	16	12	11	15	15	15	16
■ Vermoil	17	22	17	22	22	20	17	16	18	15	14	13

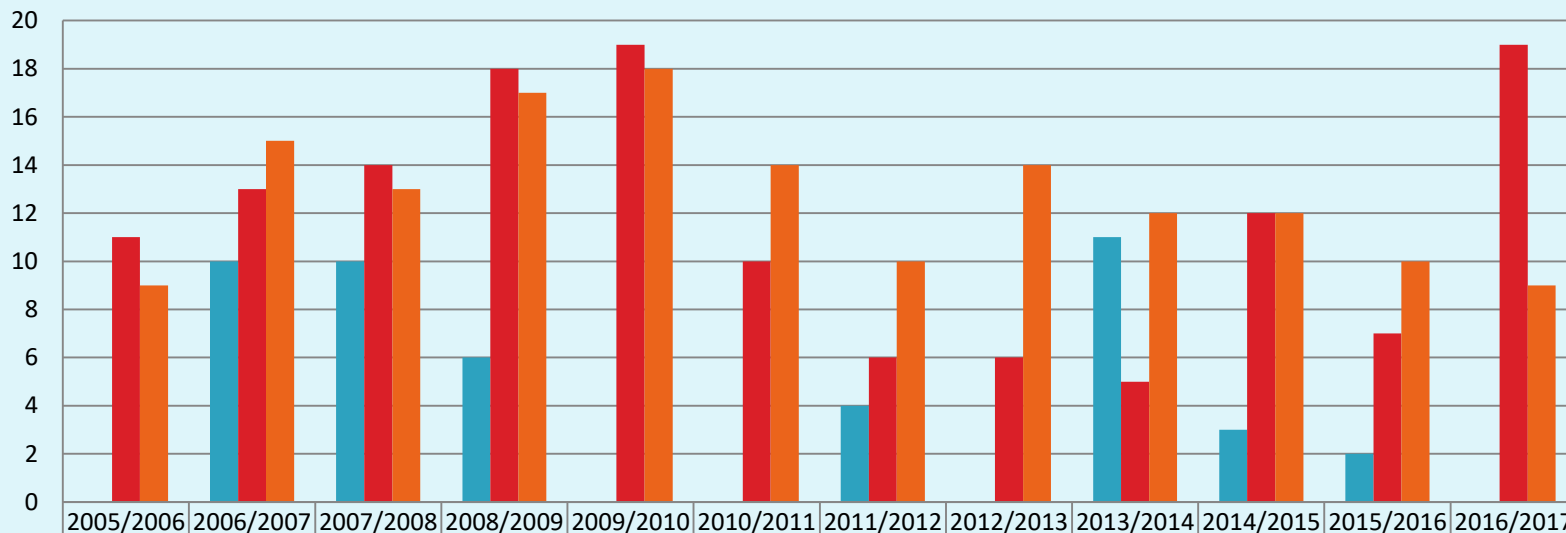


# Pré-Escolar Refeições



# Pré-Escolar

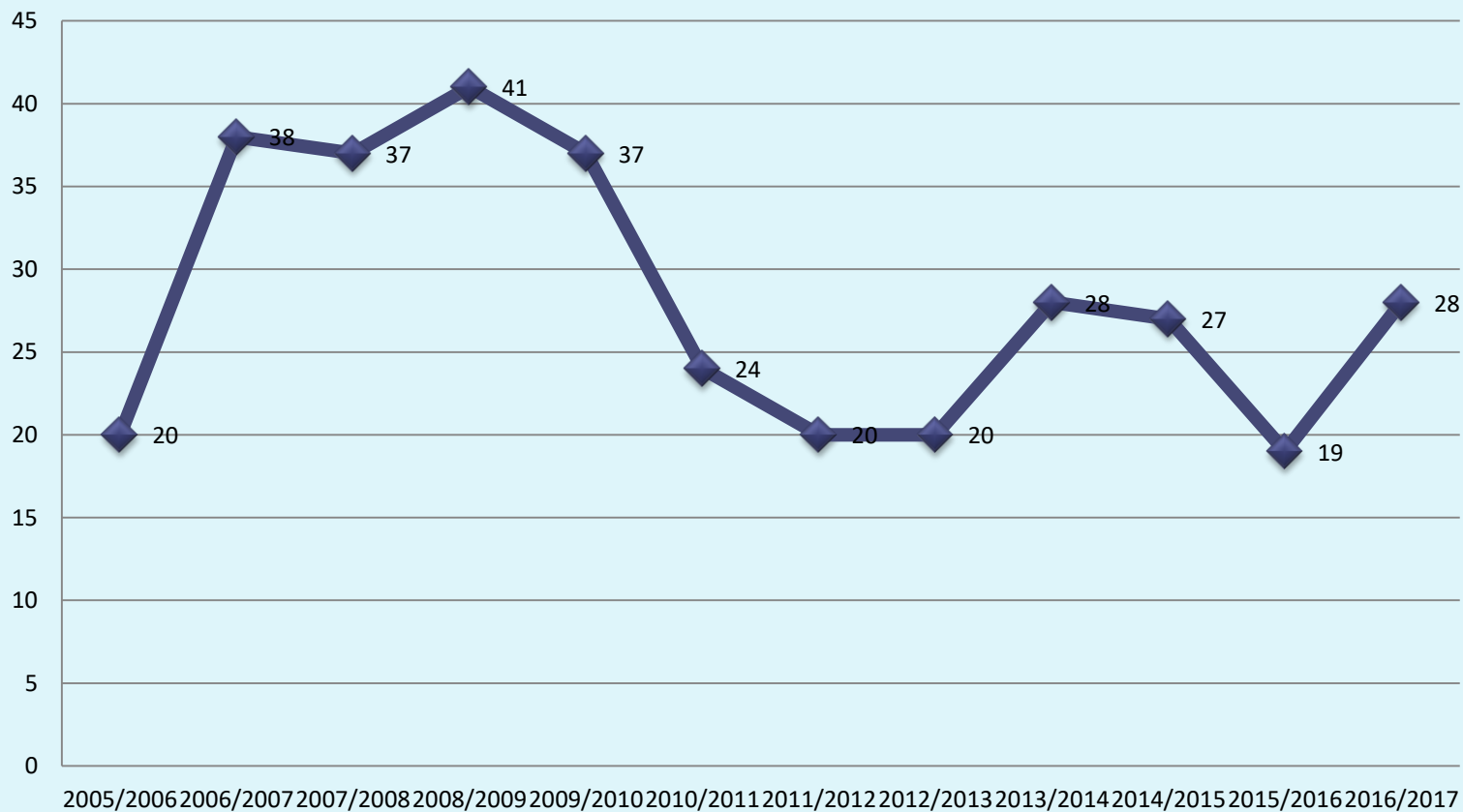
## Prolongamento de Horário



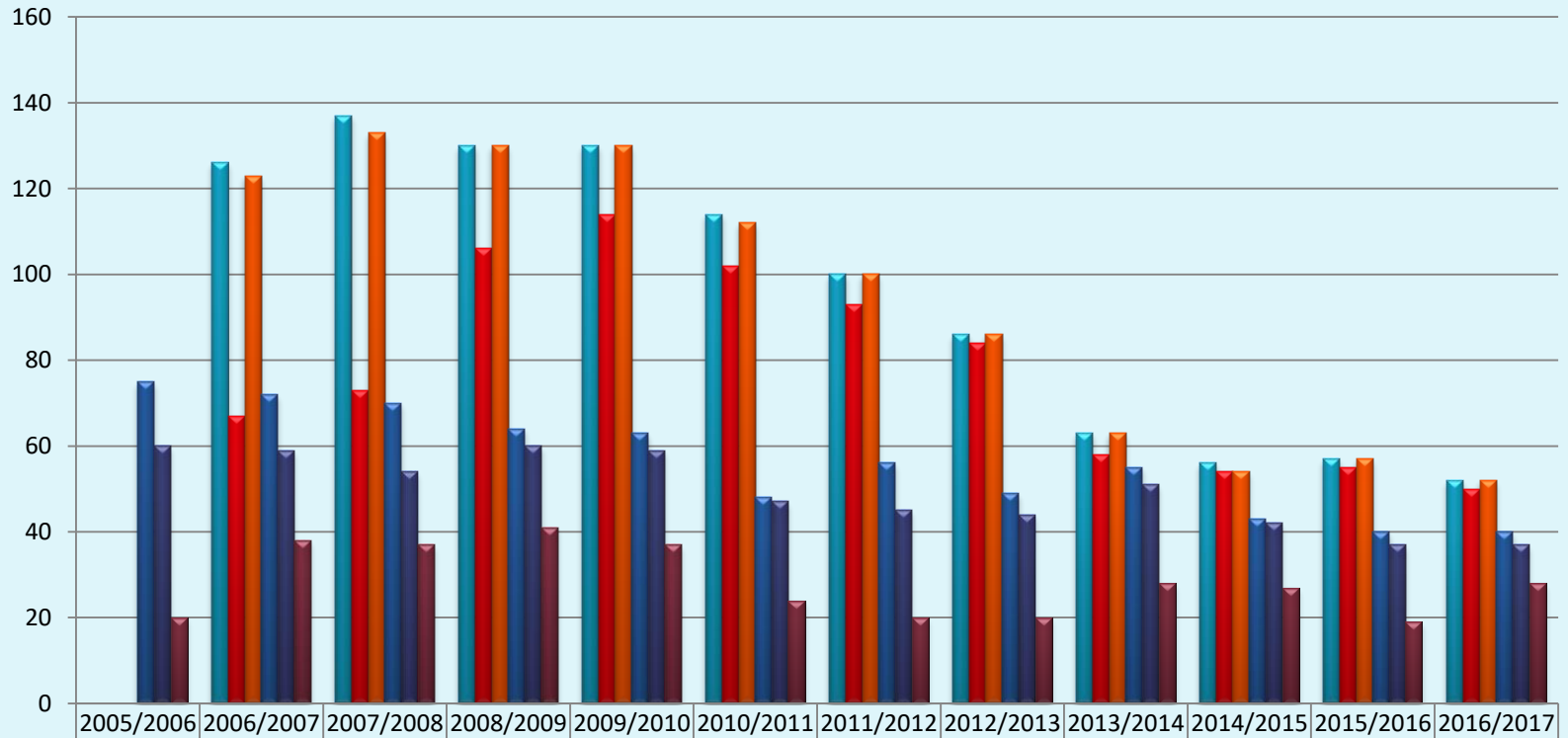
■ Matos da Ranha	0	10	10	6	0	0	4	0	11	3	2	0
■ Outeiro da Ranha	11	13	14	18	19	10	6	6	5	12	7	19
■ Vermoil	9	15	13	17	18	14	10	14	12	12	10	9

# Pré-Escolar

## Prolongamento de Horário



# Balanço Total



	2005/2006	2006/2007	2007/2008	2008/2009	2009/2010	2010/2011	2011/2012	2012/2013	2013/2014	2014/2015	2015/2016	2016/2017
1º Ciclo - Nº de Alunos	0	126	137	130	130	114	100	86	63	56	57	52
1º Ciclo - Refeições	0	67	73	106	114	102	93	84	58	54	55	50
1º Ciclo - AEC's	0	123	133	130	130	112	100	86	63	54	57	52
Pré-Escolar - Nº de Alunos	75	72	70	64	63	48	56	49	55	43	40	40
Pré-Escolar - Refeições	60	59	54	60	59	47	45	44	51	42	37	37
Pré-Escolar Prolongamento	20	38	37	41	37	24	20	20	28	27	19	28